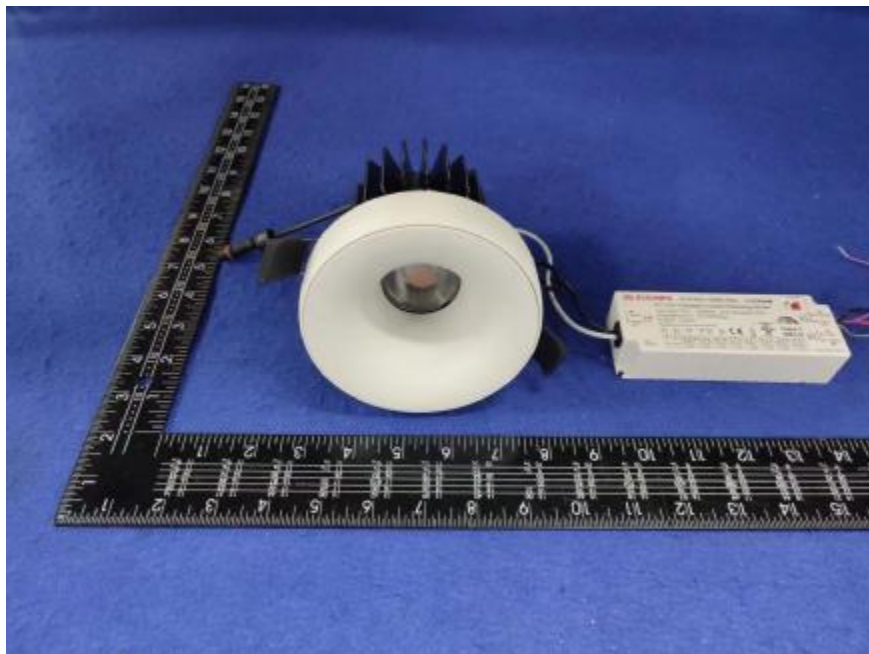


Luminaire Photograph



Light Output Ratio:	77.4%	
Luminaire Power:	27.43 W	
SHR Nominal:	0.75	Calculated using the TM5
SHR Maximum:	0.75	fine grid method.

C Range: 0 - 360DEG
C Interval: 30.0DEG
Test Speed: HIGH
Temperature: 25.3 °C
Operators: zoe
Test Date: 2023-11-4

γ Range: 0 - 180DEG
γ Interval: 1.0DEG
Test System: EVERFINE GO-SPEX500_V1 SYSTEM V2.00.461
Humidity: 65.0%
Test Distance: 3.160m [K=1.0000]
Remarks: LAMP: BXRE-30G2000-C-83 Ra: 90
LENS: PM-1083B 36R
DRIVER: PUP40A-1WMC-850 700mA
30minutes warm-up

LUMINOUS INTENSITY DISTRIBUTION DIAGRAM

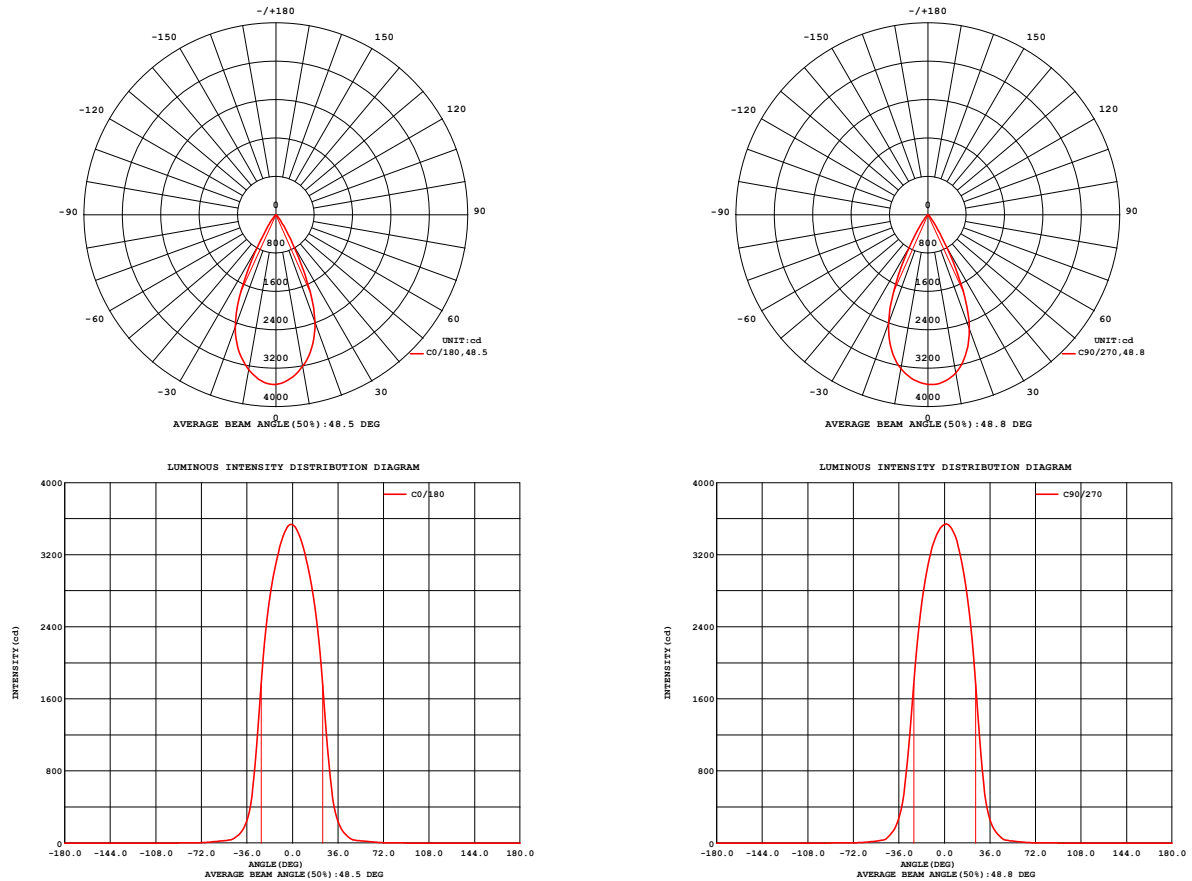


Fig. C0/C180

Fig. C90/C270

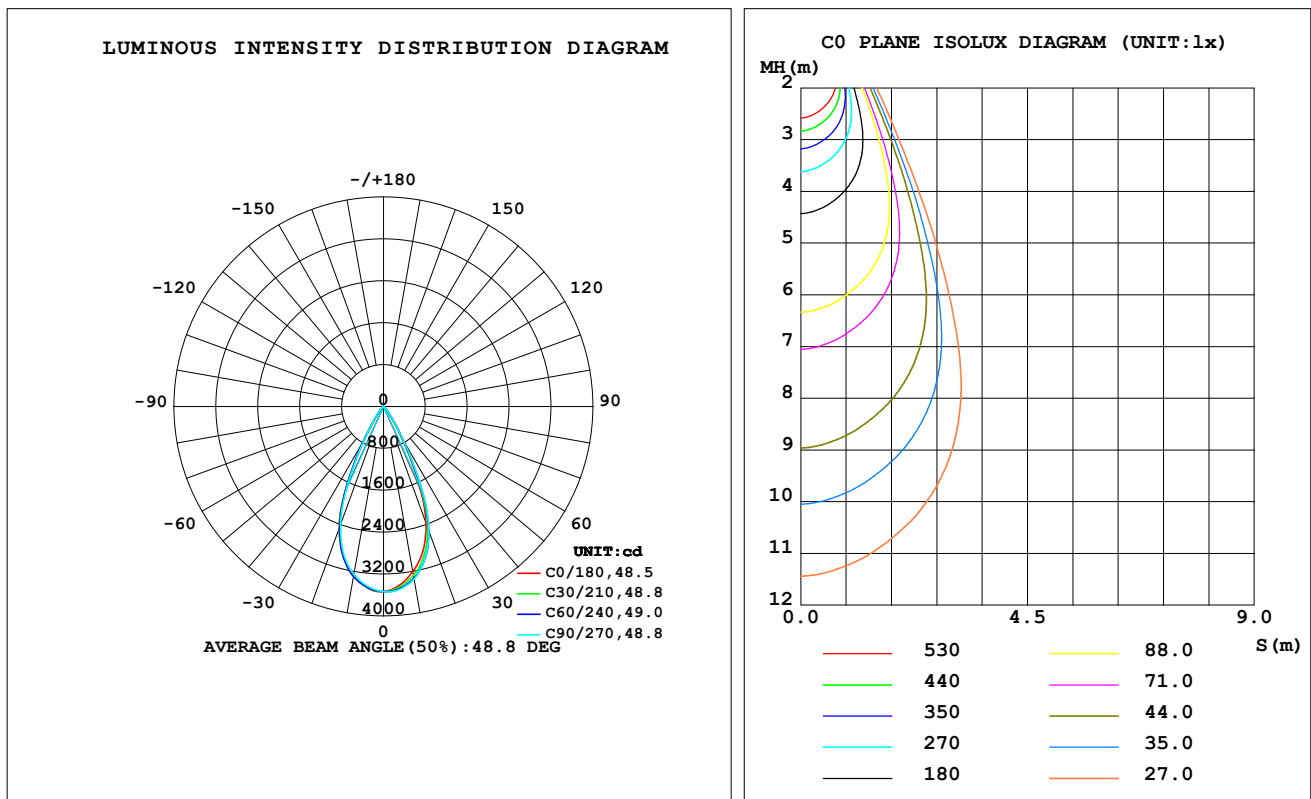
C Range: 0 - 360DEG
 C Interval: 30.0DEG
 Test Speed: HIGH
 Temperature: 25.3 °C
 Operators: zoe
 Test Date: 2023-11-4

γ Range: 0 - 180DEG
 γ Interval: 1.0DEG
 Test System: EVERFINE GO-SPEX500_V1 SYSTEM V2.00.461
 Humidity: 65.0%
 Test Distance: 3.160m [K=1.0000]
 Remarks: LAMP: BXRE-30G2000-C-83 Ra: 90
 LENS: PM-1083B 36R
 DRIVER: PUP40A-1WMC-850 700mA
 30minutes warm-up

LUMINAIRE PHOTOMETRIC TEST REPORT

Test:U:120.02V I:0.2305A P:27.428W PF:0.9900 Freq:59.98Hz Lamp Flux:2796.6x1 lm		
NAME: 2318.223-ACOT-84-AM	TYPE:	WEIGHT:
SPEC.: 3000K	DIM.:	SERIAL No.: 2311041310
MFR.: RISE	SUR.: 0.00984704m2	Shielding Angle:

DATA OF LAMP		PHOTOMETRIC DATA				Eff: 78.92 lm/W
MODEL	Bridgelux	I _{max} (cd)	3541	S/MH (C0/180)		0.73
NOMINAL POWER (W)	27	LOR (%)	77.4	S/MH (C90/270)		0.72
RATED VOLTAGE (V)	120	TOTAL FLUX (lm)	2164.5	η UP, DN (C0-180)		0.0, 39.0
NOMINAL FLUX (lm)	2796.6	CIE CLASS	DIRECT	η UP, DN (C180-360)		0.0, 38.3
LAMPS INSIDE	1	η up (%)	0.0	CIBSE SHR NOM		0.75
TEST VOLTAGE (V)	120	η down (%)	77.4	CIBSE SHR MAX		0.75



C Range: 0 - 360DEG
C Interval: 30.0DEG
Test Speed: HIGH
Temperature: 25.3 °C
Operators: zoe
Test Date: 2023-11-4

γ Range: 0 - 180DEG
γ Interval: 1.0DEG
Test System: EVERFINE GO-SPEX500_V1 SYSTEM V2.00.461
Humidity: 65.0%
Test Distance: 3.160m [K=1.0000]
Remarks: LAMP: BXRE-30G2000-C-83 Ra: 90
LENS: PM-1083B 36R
DRIVER: PUP40A-1WMC-850 700mA
30minutes warm-up

ZONAL FLUX DIAGRAM

ZONAL FLUX DIAGRAM:

γ	C0	C45	C90	C135	C180	C225	C270	C315	γ	Φ zone	Φ total	%lum,lamp
10	3206	3306	3347	3288	3278	3295	3257	3200	0- 10	324.5	324.5	15,11.6
20	2379	2501	2530	2496	2485	2461	2404	2355	10- 20	816.3	1141	52.7,40.8
30	717.7	779.1	804.9	781.9	764.8	785.1	781.0	720.1	20- 30	728.7	1869	86.4,66.8
40	130.5	133.6	139.5	131.5	128.8	135.7	142.0	131.9	30- 40	214.4	2084	96.3,74.5
50	30.26	30.07	28.78	31.33	32.33	30.30	28.47	29.63	40- 50	50.42	2134	98.6,76.3
60	16.55	14.77	12.16	15.39	17.17	14.83	11.69	14.78	50- 60	19.59	2154	99.5,77
70	4.794	4.048	2.799	4.353	5.234	4.050	2.630	3.910	60- 70	8.620	2163	99.9,77.3
80	0.5860	0.3854	0.2851	0.4054	0.6195	0.3617	0.2385	0.3555	70- 80	1.827	2164	100,77.4
90	0	0	0	0	0	0	0	0	80- 90	0.1412	2164	100,77.4
100	0	0	0	0	0	0	0	0	90-100	0	2164	100,77.4
110	0	0	0	0	0	0	0	0	100-110	0	2164	100,77.4
120	0	0	0	0	0	0	0	0	110-120	0	2164	100,77.4
130	0	0	0	0	0	0	0	0	120-130	0	2164	100,77.4
140	0	0	0	0	0	0	0	0	130-140	0	2164	100,77.4
150	0	0	0	0	0	0	0	0	140-150	0	2164	100,77.4
160	0	0	0	0	0	0	0	0	150-160	0	2164	100,77.4
170	0	0	0	0	0	0	0	0	160-170	0	2164	100,77.4
180	0	0	0	0	0	0	0	0	170-180	0	2164	100,77.4
DEG	LUMINOUS INTENSITY:cd									UNIT:lm		

C Range: 0 - 360DEG
C Interval: 30.0DEG
Test Speed: HIGH
Temperature:25.3℃
Operators:zoe
Test Date:2023-11-4

γ Range: 0 - 180DEG
 γ Interval: 1.0DEG
Test System:EVERFINE GO-SPEX500_V1 SYSTEM V2.00.461
Humidity:65.0%
Test Distance:3.160m [K=1.0000]
Remarks: LAMP:BXRE-30G2000-C-83 Ra:90
LENS:PM-1083B 36R
DRIVER: PUP40A-1WMC-850 700mA
30minutes warm-up

LUMINANCE LIMITATION CURVES

Test:U:120.02V I:0.2305A P:27.428W PF:0.9900 Freq:59.98Hz
Lamp Flux:2796.6x1 lm

NAME: 2318.223-ACOT-84-AM

TYPE:

WEIGHT:

SPEC.: 3000K

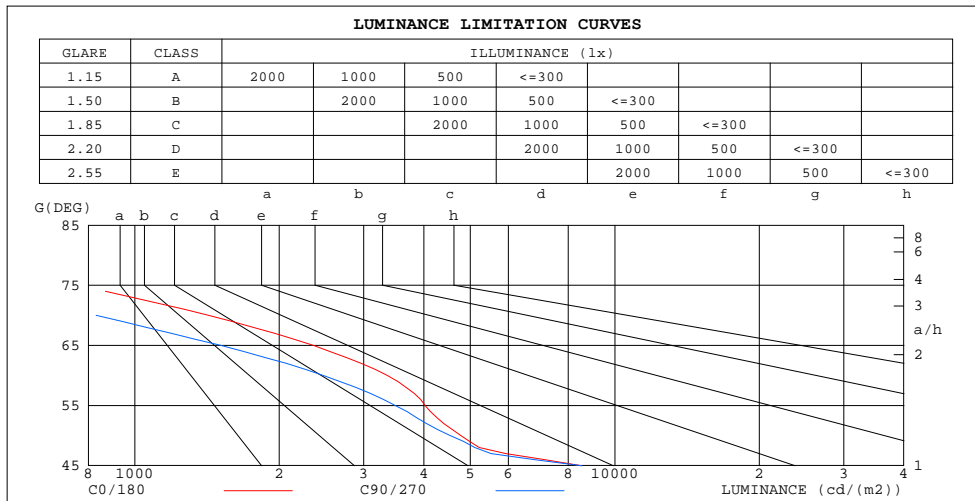
DIM.:

SERIAL No.: 2311041310

MFR.: RISE

SUR.: 0.00984704m2

Shielding Angle:



LUMINANCE cd/(m2)		
G(180)	C0/180	C90/270
85	179	121
80	343	167
75	758	397
70	1424	831
65	2354	1512
60	3361	2470
55	4027	3492
50	4781	4547
45	8534	8548

C Range: 0 - 360DEG
C Interval: 30.0DEG
Test Speed: HIGH
Temperature:25.3 °C
Operators:zoe
Test Date:2023-11-4

γ Range: 0 - 180DEG
γ Interval: 1.0DEG
Test System:EVERFINE GO-SPEX500_V1 SYSTEM V2.00.461
Humidity:65.0%
Test Distance:3.160m [K=1.0000]
Remarks: LAMP:BXRE-30G2000-C-83 Ra:90
LENS:PM-1083B 36R
DRIVER: PUP40A-1WMC-850 700mA
30minutes warm-up

CU AND LUMINAIRE BUDGETARY ESTIMATE DIAGRAM

Test:U:120.02V I:0.2305A P:27.428W PF:0.9900 Freq:59.98Hz
Lamp Flux:2796.6x1 lm

NAME: 2318.223-ACOT-84-AM

TYPE:

WEIGHT:

SPEC.: 3000K

DIM.:

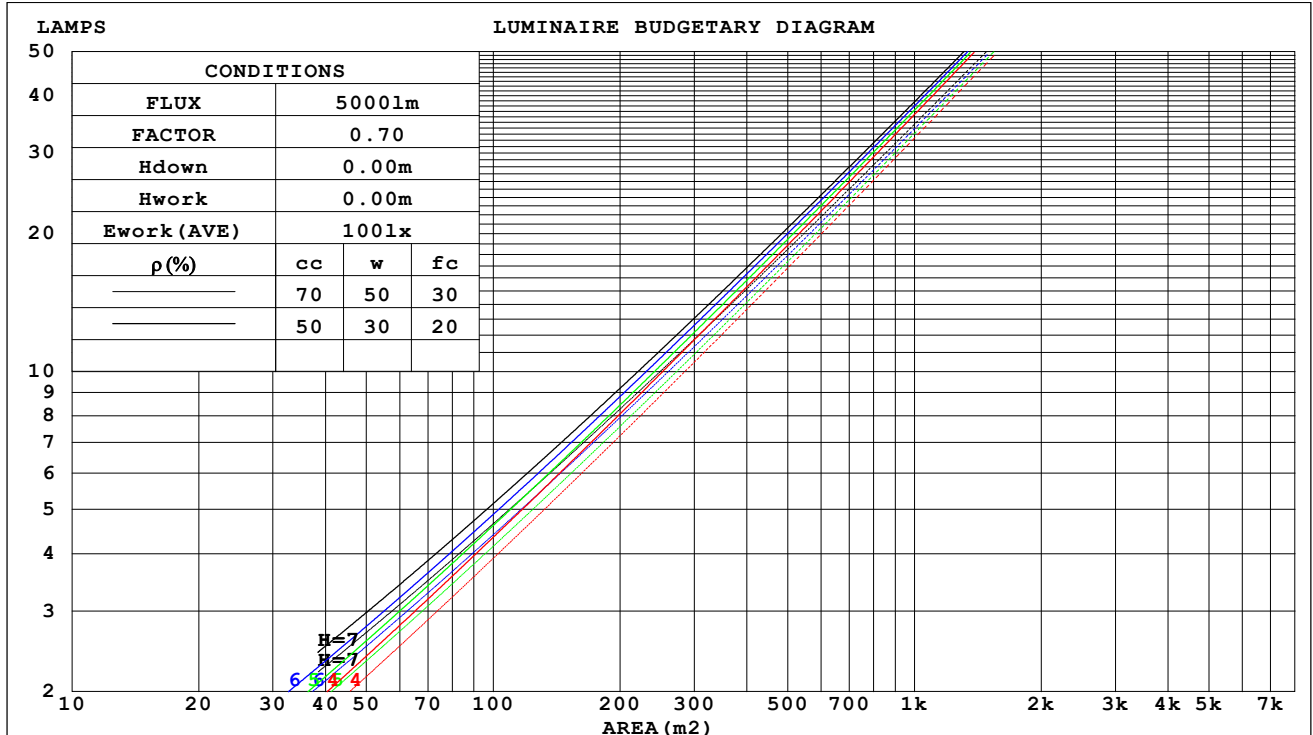
SERIAL No.: 2311041310

MFR.: RISE

SUR.: 0.00984704m2

Shielding Angle:

ρ_{cc}	80%			70%			50%			30%			10%			0
ρ_w	50%	30%	10%	50%	30%	10%	50%	30%	10%	50%	30%	10%	50%	30%	10%	0
ρ_{fc}	20%			20%			20%			20%			20%			0
RCR	RCR:Room Cavity Ratio Coefficients of Utilization(CU)															
0.0	.92	.92	.92	.90	.90	.90	.86	.86	.86	.82	.82	.82	.79	.79	.79	.77
1.0	.86	.85	.83	.85	.83	.82	.82	.80	.79	.79	.78	.77	.76	.75	.75	.73
2.0	.81	.78	.76	.80	.77	.75	.77	.75	.73	.75	.73	.72	.73	.72	.70	.69
3.0	.76	.73	.70	.75	.72	.70	.73	.71	.69	.72	.69	.67	.70	.68	.66	.65
4.0	.72	.68	.65	.71	.68	.65	.70	.67	.64	.68	.66	.64	.67	.65	.63	.62
5.0	.68	.64	.61	.68	.64	.61	.66	.63	.61	.65	.62	.60	.64	.61	.60	.58
6.0	.65	.61	.58	.64	.60	.58	.63	.60	.57	.62	.59	.57	.61	.59	.56	.55
7.0	.62	.58	.55	.61	.57	.54	.60	.57	.54	.59	.56	.54	.59	.56	.54	.53
8.0	.59	.55	.52	.58	.54	.52	.57	.54	.51	.57	.54	.51	.56	.53	.51	.50
9.0	.56	.52	.49	.56	.52	.49	.55	.51	.49	.54	.51	.49	.54	.51	.49	.48
10.0	.54	.50	.47	.53	.49	.47	.53	.49	.47	.52	.49	.47	.52	.49	.46	.46



C Range: 0 - 360DEG
C Interval: 30.0DEG
Test Speed: HIGH
Temperature:25.3℃
Operators:zoe
Test Date:2023-11-4

γ Range: 0 - 180DEG
 γ Interval: 1.0DEG
Test System:EVERFINE GO-SPEX500_V1 SYSTEM V2.00.461
Humidity:65.0%
Test Distance:3.160m [K=1.0000]
Remarks: LAMP:BXRE-30G2000-C-83 Ra:90
LENS:PM-1083B 36R
DRIVER: PUP40A-1WMC-850 700mA
30minutes warm-up

WEC AND CCEC

Test:U:120.02V I:0.2305A P:27.428W PF:0.9900 Freq:59.98Hz Lamp Flux:2796.6x1 lm		
NAME: 2318.223-ACOT-84-AM	TYPE:	WEIGHT:
SPEC.: 3000K	DIM.:	SERIAL No.: 2311041310
MFR.: RISE	SUR.: 0.00984704m2	Shielding Angle:

pcc	80%			70%			50%			30%			10%			0	
pw	50%	30%	10%	50%	30%	10%	50%	30%	10%	50%	30%	10%	50%	30%	10%	0	
pfc	20%			20%			20%			20%			20%			0	
RCR	RCR:Room Cavity Ratio						Wall Exitance Coeffcients (WEC)										
0.0																	
1.0	.126	.072	.023	.121	.069	.022	.111	.064	.020	.102	.059	.019	.094	.054	.018		
2.0	.119	.065	.020	.115	.063	.020	.107	.059	.018	.099	.056	.017	.093	.052	.017		
3.0	.113	.060	.018	.109	.059	.018	.103	.056	.017	.096	.053	.016	.090	.050	.015		
4.0	.107	.056	.016	.104	.054	.016	.098	.052	.016	.093	.050	.015	.088	.048	.015		
5.0	.102	.052	.015	.099	.051	.015	.094	.049	.014	.090	.047	.014	.085	.045	.014		
6.0	.097	.049	.014	.095	.048	.014	.091	.046	.013	.086	.045	.013	.082	.043	.013		
7.0	.093	.046	.013	.091	.045	.013	.087	.044	.013	.083	.043	.012	.080	.042	.012		
8.0	.089	.044	.012	.087	.043	.012	.084	.042	.012	.081	.041	.012	.077	.040	.012		
9.0	.085	.041	.012	.084	.041	.011	.081	.040	.011	.078	.039	.011	.075	.038	.011		
10.0	.082	.039	.011	.081	.039	.011	.078	.038	.011	.075	.037	.011	.073	.037	.010		

pcc	80%			70%			50%			30%			10%			0	
pw	50%	30%	10%	50%	30%	10%	50%	30%	10%	50%	30%	10%	50%	30%	10%	0	
pfc	20%			20%			20%			20%			20%			0	
RCR	RCR:Room Cavity Ratio						Ceiling Cavity Exitance Coefficients(CCEC)										
0.0	.147	.147	.147	.126	.126	.126	.086	.086	.086	.049	.049	.049	.016	.016	.016		
1.0	.132	.122	.113	.113	.105	.097	.077	.072	.067	.044	.042	.039	.014	.013	.013		
2.0	.119	.103	.089	.102	.088	.077	.070	.061	.054	.040	.036	.031	.013	.011	.010		
3.0	.109	.088	.071	.093	.076	.062	.064	.053	.043	.037	.031	.025	.012	.010	.008		
4.0	.100	.076	.058	.086	.066	.050	.059	.046	.035	.034	.027	.021	.011	.009	.007		
5.0	.093	.067	.048	.080	.058	.042	.055	.041	.029	.032	.024	.017	.010	.008	.006		
6.0	.087	.060	.040	.075	.052	.035	.052	.036	.025	.030	.021	.015	.010	.007	.005		
7.0	.082	.054	.034	.070	.047	.030	.049	.033	.021	.028	.019	.012	.009	.006	.004		
8.0	.077	.049	.029	.067	.042	.025	.046	.030	.018	.027	.018	.011	.009	.006	.004		
9.0	.073	.045	.025	.063	.039	.022	.044	.027	.016	.025	.016	.009	.008	.005	.003		
10.0	.070	.041	.022	.060	.036	.019	.042	.025	.014	.024	.015	.008	.008	.005	.003		

C Range: 0 - 360DEG
C Interval: 30.0DEG
Test Speed: HIGH
Temperature:25.3℃
Operators:zoe
Test Date:2023-11-4

γ Range: 0 - 180DEG
γ Interval: 1.0DEG
Test System:EVERFINE GO-SPEX500_V1 SYSTEM V2.00.461
Humidity:65.0%
Test Distance:3.160m [K=1.0000]
Remarks: LAMP:BXRE-30G2000-C-83 Ra:90
LENS:PM-1083B 36R
DRIVER: PUP40A-1WMC-850 700mA
30minutes warm-up

UGR(Unified Glare Rating) Table

Test:U:120.02V I:0.2305A P:27.428W PF:0.9900 Freq:59.98Hz Lamp Flux:2796.6x1 lm										
NAME: 2318.223-ACOT-84-AM					TYPE:			WEIGHT:		
SPEC.: 3000K					DIM.:			SERIAL No.: 2311041310		
MFR.: RISE					SUR.: 0.00984704m2			Shielding Angle:		
ceiling/cavity	0.7	0.7	0.5	0.5	0.3	0.7	0.7	0.5	0.5	0.3
walls	0.5	0.3	0.5	0.3	0.3	0.5	0.3	0.5	0.3	0.3
working plane	0.2	0.2	0.2	0.2	0.2	0.2	0.2	0.2	0.2	0.2
Room dimensions	Viewed crosswise					Viewed endwise				
x = 2H y = 2H	10.3	11.2	10.5	11.3	11.5	10.6	11.5	10.8	11.6	11.8
3H	10.3	11.0	10.5	11.2	11.4	10.5	11.3	10.7	11.5	11.7
4H	10.2	10.9	10.5	11.1	11.4	10.4	11.1	10.7	11.4	11.6
6H	10.1	10.8	10.4	11.0	11.3	10.3	11.0	10.6	11.2	11.5
8H	10.1	10.7	10.4	11.0	11.2	10.3	10.9	10.6	11.2	11.4
12H	10.0	10.7	10.3	10.9	11.2	10.2	10.9	10.5	11.1	11.4
4H 2H	10.2	10.9	10.4	11.1	11.3	10.4	11.2	10.7	11.4	11.6
3H	10.1	10.7	10.4	11.0	11.3	10.3	10.9	10.6	11.2	11.5
4H	10.0	10.6	10.4	10.9	11.2	10.2	10.8	10.6	11.1	11.4
6H	9.9	10.4	10.3	10.8	11.1	10.1	10.6	10.5	11.0	11.3
8H	9.9	10.4	10.3	10.7	11.1	10.1	10.5	10.5	10.9	11.3
12H	9.8	10.3	10.2	10.6	11.0	10.0	10.5	10.4	10.8	11.2
8H 4H	9.9	10.4	10.3	10.7	11.1	10.1	10.6	10.5	10.9	11.3
6H	9.8	10.2	10.2	10.6	11.0	10.0	10.4	10.4	10.8	11.2
8H	9.7	10.1	10.2	10.5	10.9	9.9	10.3	10.4	10.7	11.1
12H	9.7	10.0	10.1	10.4	10.9	9.9	10.2	10.3	10.6	11.1
12H 4H	9.8	10.3	10.2	10.6	11.0	10.0	10.5	10.4	10.8	11.2
6H	9.7	10.1	10.2	10.5	10.9	9.9	10.3	10.4	10.7	11.1
8H	9.7	10.0	10.1	10.4	10.9	9.9	10.2	10.3	10.6	11.1
Variations with the observer position at spacings(CIE Pub.117):										
S = 1.0H	+ 2.9 / - 4.8					+ 3.3 / - 6.4				
1.5H	+ 5.0 / - 3.9					+ 5.4 / - 4.6				
2.0H	+ 3.5 / - 2.0					+ 4.3 / - 3.3				

CIE Pub.117, 2797 lm Total Lamp Luminous Flux Correct (8log(F/F0) = 3.6)
Area: 0.00984704 m2

C Range: 0 - 360DEG
C Interval: 30.0DEG
Test Speed: HIGH
Temperature:25.3℃
Operators:zoe
Test Date:2023-11-4

γ Range: 0 - 180DEG
γ Interval: 1.0DEG
Test System:EVERFINE GO-SPEX500_V1 SYSTEM V2.00.461
Humidity:65.0%
Test Distance:3.160m [K=1.0000]
Remarks: LAMP:BXRE-30G2000-C-83 Ra:90
LENS:PM-1083B 36R
DRIVER: PUP40A-1WMC-850 700mA
30minutes warm-up

UTILIZATION FACTORS TABLE

Test:U:120.02V I:0.2305A P:27.428W PF:0.9900 Freq:59.98Hz Lamp Flux:2796.6x1 lm		
NAME: 2318.223-ACOT-84-AM	TYPE:	WEIGHT:
SPEC.: 3000K	DIM.:	SERIAL No.: 2311041310
MFR.: RISE	SUR.: 0.00984704m2	Shielding Angle:

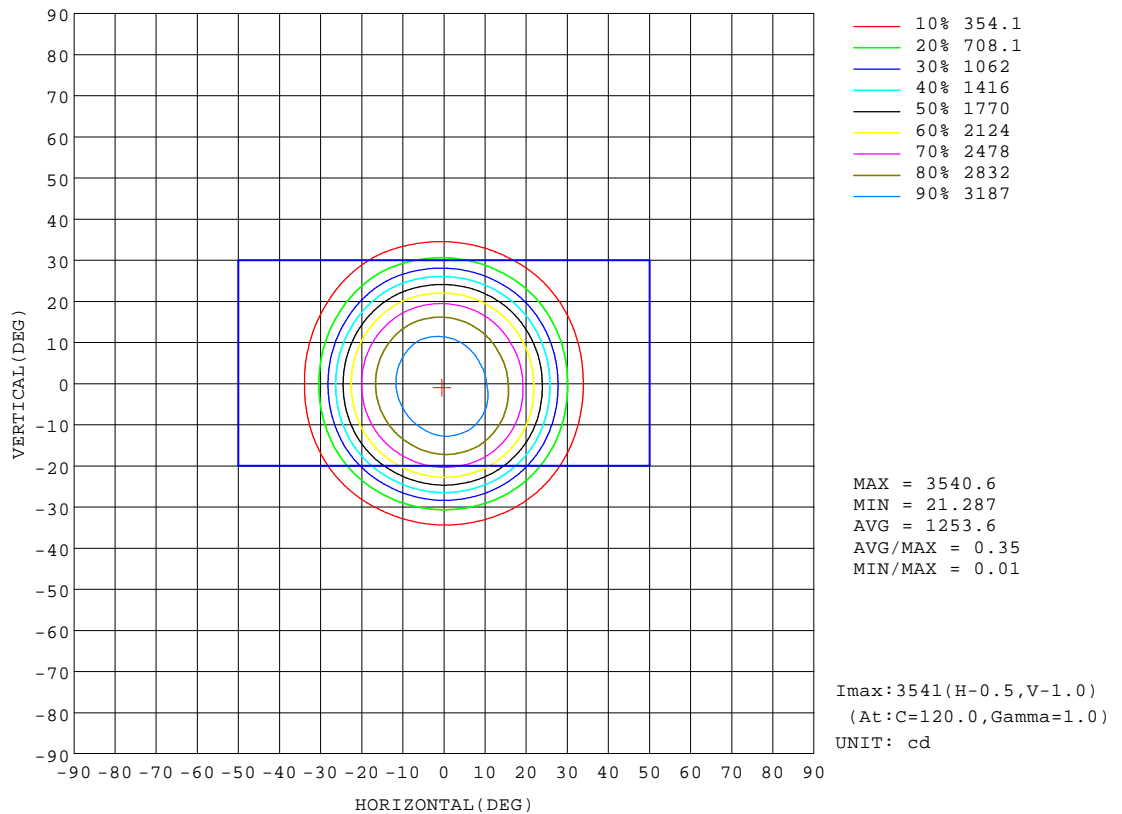
REFLECTANCE										
Ceiling	0.8	0.8	0.8	0.7	0.7	0.7	0.5	0.5	0.5	0
Walls	0.7	0.5	0.3	0.7	0.5	0.3	0.7	0.5	0.3	0
Working plane	0.2	0.2	0.2	0.2	0.2	0.2	0.2	0.2	0.2	0
ROOM INDEX	UTILIZATION FACTORS (PERCENT) $k(RI) \times RCR = 5$									
k = 0.60	69	64	62	69	64	62	68	64	61	59
0.80	75	70	68	74	70	68	73	70	67	65
1.00	78	74	71	77	73	71	76	73	70	68
1.25	81	77	74	80	76	74	78	76	73	70
1.50	83	79	77	82	79	76	80	78	76	72
2.00	85	81	79	83	81	79	81	79	77	73
2.50	86	83	81	85	82	80	82	80	79	74
3.00	87	84	82	86	83	82	83	81	80	75
4.00	88	86	85	87	85	84	84	83	82	76
5.00	89	88	86	88	86	85	85	84	83	77
ROOM INDEX	UF (total)									Direct
According to DIN EN 13032-2 2004			Suspended					SHRNOM = 1.25		

C Range: 0 - 360DEG
C Interval: 30.0DEG
Test Speed: HIGH
Temperature: 25.3 °C
Operators: zoe
Test Date: 2023-11-4

γ Range: 0 - 180DEG
γ Interval: 1.0DEG
Test System: EVERFINE GO-SPEX500_V1 SYSTEM V2.00.461
Humidity: 65.0%
Test Distance: 3.160m [K=1.0000]
Remarks: LAMP: BXRE-30G2000-C-83 Ra: 90
LENS: PM-1083B 36R
DRIVER: PUP40A-1WMC-850 700mA
30minutes warm-up

ISOCANDELA DIAGRAM

Test:U:120.02V I:0.2305A P:27.428W PF:0.9900 Freq:59.98Hz Lamp Flux:2796.6x1 lm		
NAME: 2318.223-ACOT-84-AM	TYPE:	WEIGHT:
SPEC.: 3000K	DIM.:	SERIAL No.: 2311041310
MFR.: RISE	SUR.: 0.00984704m2	Shielding Angle:

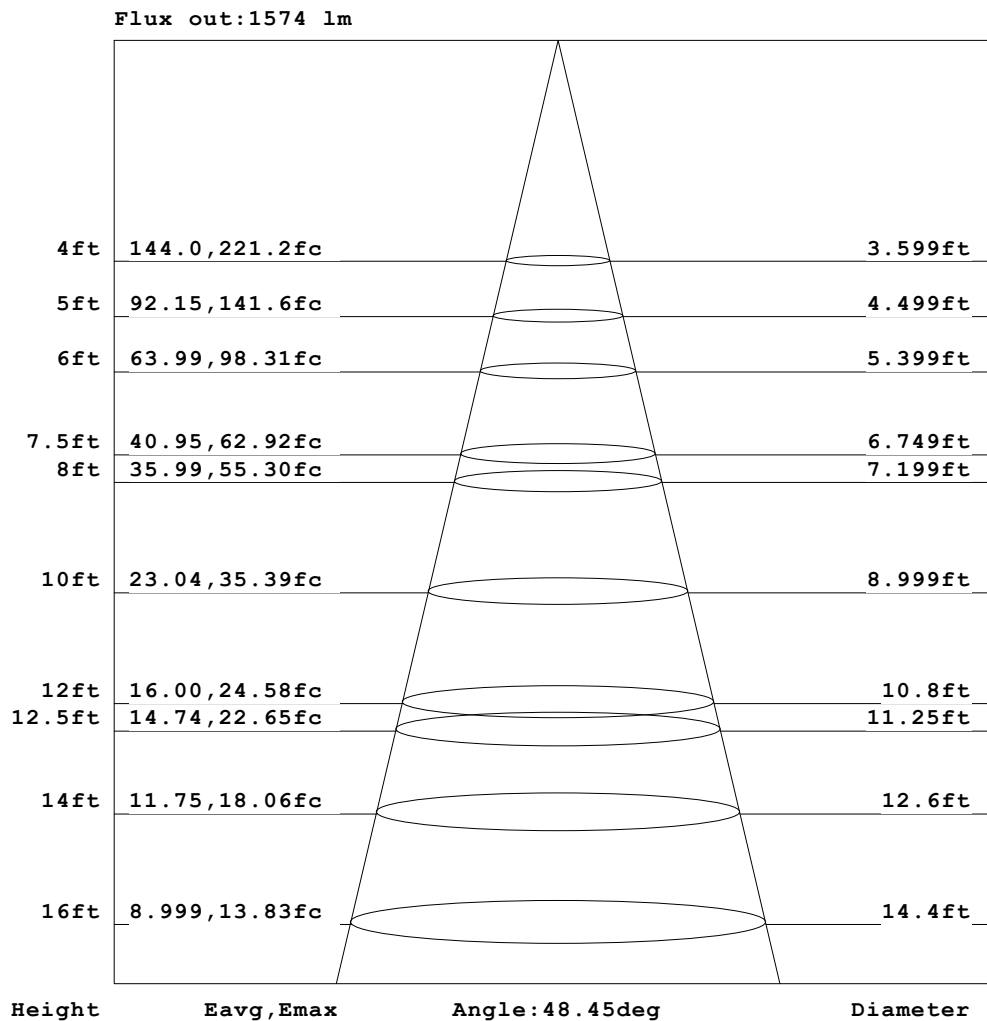


C Range: 0 - 360DEG
C Interval: 30.0DEG
Test Speed: HIGH
Temperature: 25.3 °C
Operators: zoe
Test Date: 2023-11-4

γ Range: 0 - 180DEG
γ Interval: 1.0DEG
Test System: EVERFINE GO-SPEX500_V1 SYSTEM V2.00.461
Humidity: 65.0%
Test Distance: 3.160m [K=1.0000]
Remarks: LAMP: BXRE-30G2000-C-83 Ra: 90
LENS: PM-1083B 36R
DRIVER: PUP40A-1WMC-850 700mA
30minutes warm-up

AAI Figure

Test:U:120.02V I:0.2305A P:27.428W PF:0.9900 Freq:59.98Hz Lamp Flux:2796.6x1 lm		
NAME: 2318.223-ACOT-84-AM	TYPE:	WEIGHT:
SPEC.: 3000K	DIM.:	SERIAL No.: 2311041310
MFR.: RISE	SUR.: 0.00984704m2	Shielding Angle:



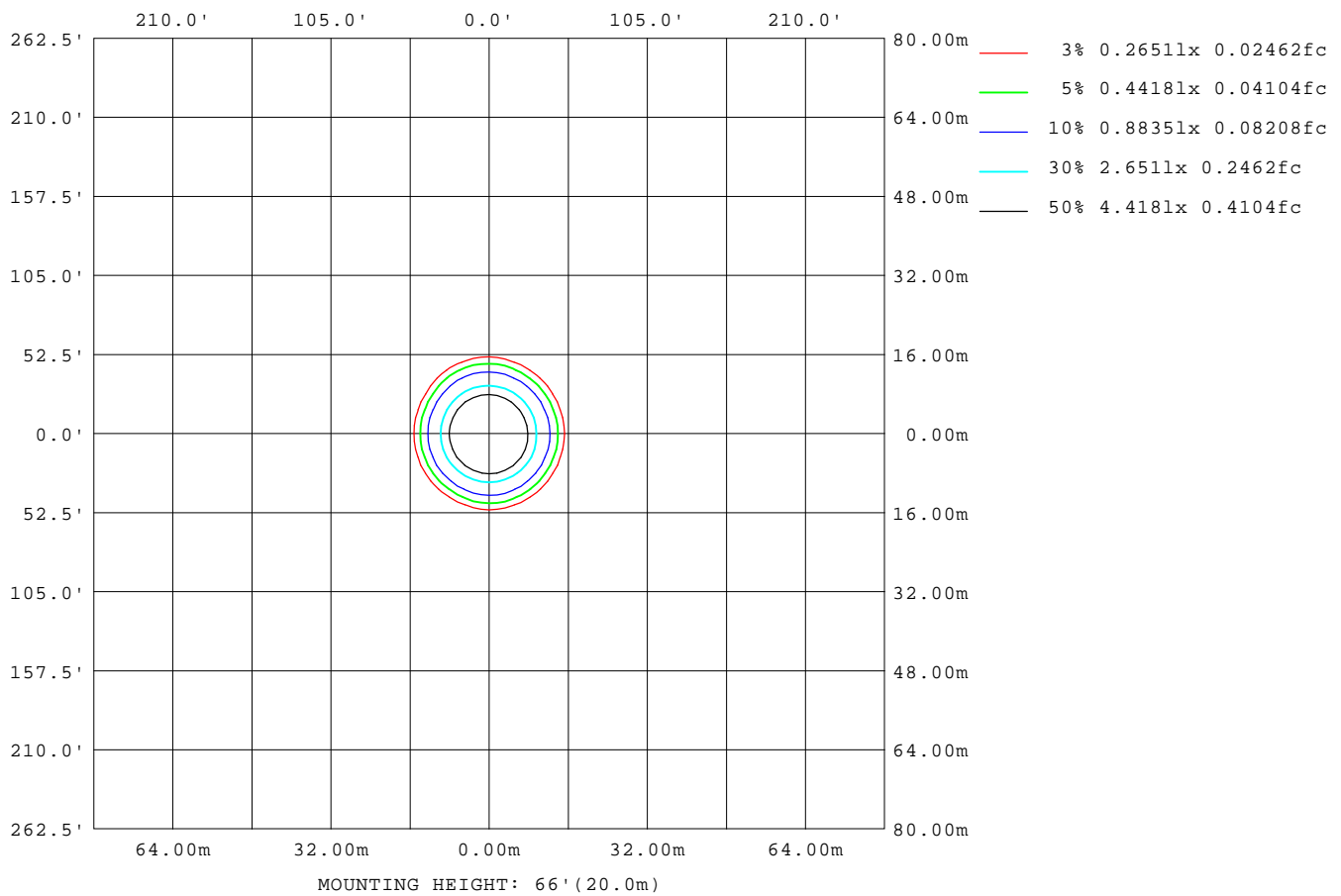
Note: The Curves indicate the illuminated area and the average illumination when the luminaire is at different distance.

C Range: 0 - 360DEG
C Interval: 30.0DEG
Test Speed: HIGH
Temperature: 25.3 °C
Operators: zoe
Test Date: 2023-11-4

γ Range: 0 - 180DEG
γ Interval: 1.0DEG
Test System: EVERFINE GO-SPEX500_V1 SYSTEM V2.00.461
Humidity: 65.0%
Test Distance: 3.160m [K=1.0000]
Remarks: LAMP: BXRE-30G2000-C-83 Ra: 90
LENS: PM-1083B 36R
DRIVER: PUP40A-1WMC-850 700mA
30minutes warm-up

ISOLUX DIAGRAM

Test:U:120.02V I:0.2305A P:27.428W PF:0.9900 Freq:59.98Hz Lamp Flux:2796.6x1 lm		
NAME: 2318.223-ACOT-84-AM	TYPE:	WEIGHT:
SPEC.: 3000K	DIM.:	SERIAL No.: 2311041310
MFR.: RISE	SUR.: 0.00984704m2	Shielding Angle:



C Range: 0 - 360DEG
C Interval: 30.0DEG
Test Speed: HIGH
Temperature:25.3 °C
Operators:zoe
Test Date:2023-11-4

γ Range: 0 - 180DEG
γ Interval: 1.0DEG
Test System:EVERFINE GO-SPEX500_V1 SYSTEM V2.00.461
Humidity:65.0%
Test Distance:3.160m [K=1.0000]
Remarks: LAMP:BXRE-30G2000-C-83 Ra:90
LENS:PM-1083B 36R
DRIVER: PUP40A-1WMC-850 700mA
30minutes warm-up

LED Avg.L Report

Test:U:120.02V I:0.2305A P:27.428W PF:0.9900 Freq:59.98Hz Lamp Flux:2796.6x1 lm		
NAME: 2318.223-ACOT-84-AM	TYPE:	WEIGHT:
SPEC.: 3000K	DIM.:	SERIAL No.: 2311041310
MFR.: RISE	SUR.: 0.00984704m2	Shielding Angle:

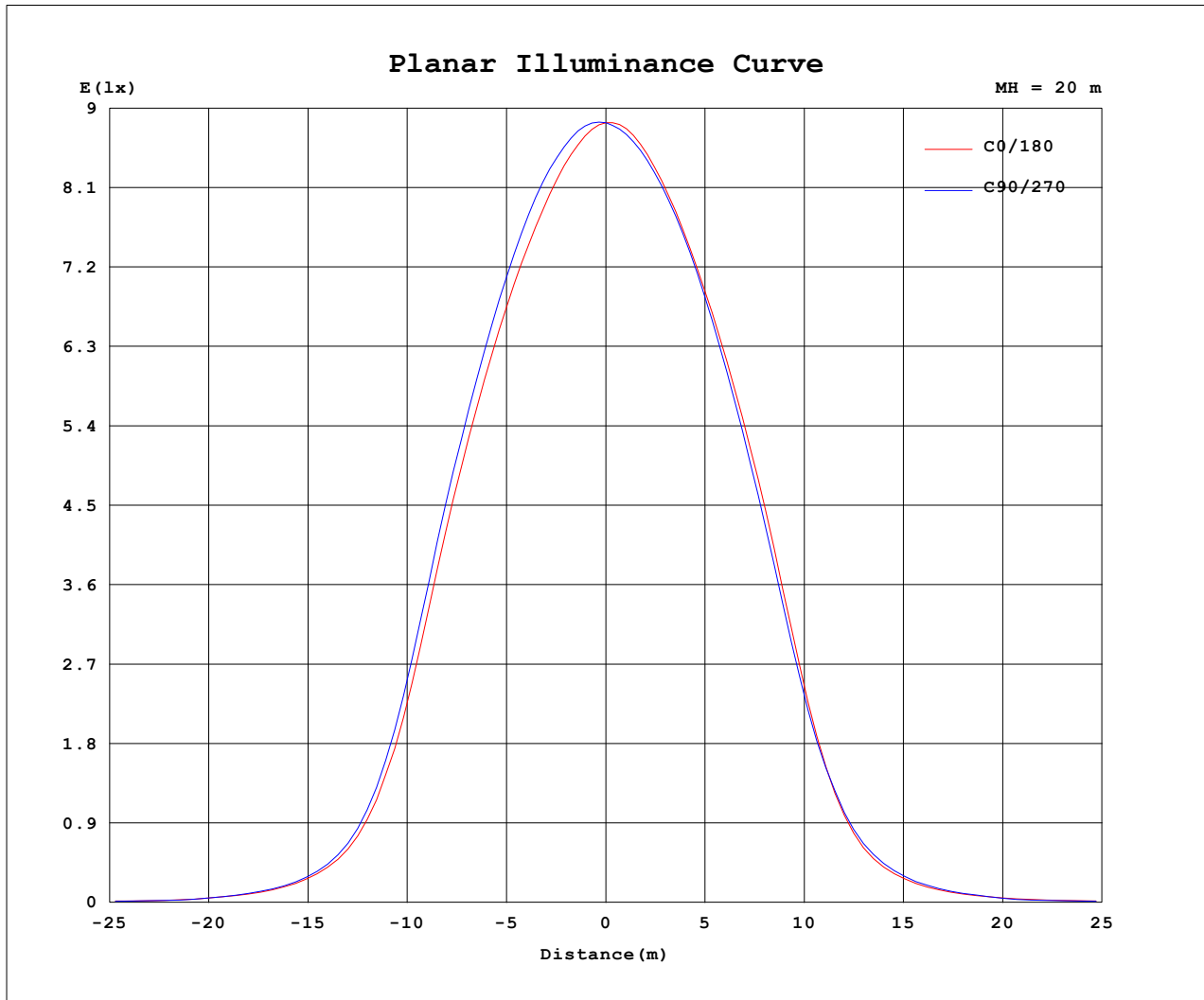
AvgL	cd/m2
L_0~180 (65) av	2430
L_0~180 (75) av	796
L_0~180 (85) av	165
L_90~270 (65) av	1479
L_90~270 (75) av	376
L_90~270 (85) av	114
L_45 (65) av	2073
L_45 (75) av	591
L_45 (85) av	80

Standard: GB/T 29293-2012

C Range: 0 - 360DEG
C Interval: 30.0DEG
Test Speed: HIGH
Temperature:25.3℃
Operators:zoe
Test Date:2023-11-4

γ Range: 0 - 180DEG
γ Interval: 1.0DEG
Test System:EVERFINE GO-SPEX500_V1 SYSTEM V2.00.461
Humidity:65.0%
Test Distance:3.160m [K=1.0000]
Remarks: LAMP:BXRE-30G2000-C-83 Ra:90
LENS:PM-1083B 36R
DRIVER: PUP40A-1WMC-850 700mA
30minutes warm-up

Planar Illuminance Curve



C Range: 0 - 360DEG
 C Interval: 30.0DEG
 Test Speed: HIGH
 Temperature: 25.3 °C
 Operators: zoe
 Test Date: 2023-11-4

γ Range: 0 - 180DEG
 γ Interval: 1.0DEG
 Test System: EVERFINE GO-SPEX500_V1 SYSTEM V2.00.461
 Humidity: 65.0%
 Test Distance: 3.160m [K=1.0000]
 Remarks: LAMP: BXRE-30G2000-C-83 Ra: 90
 LENS: PM-1083B 36R
 DRIVER: PUP40A-1WMC-850 700mA
 30minutes warm-up

LUMINOUS DISTRIBUTION INTENSITY DATA

Test:U:120.02V I:0.2305A P:27.428W PF:0.9900 Freq:59.98Hz Lamp Flux:2796.6x1 lm		
NAME: 2318.223-ACOT-84-AM	TYPE:	WEIGHT:
SPEC.: 3000K	DIM.:	SERIAL No.: 2311041310
MFR.: RISE	SUR.: 0.00984704m2	Shielding Angle:

Table--1

UNIT: cd

C (DEG) γ (DEG)	0	30	60	90	120	150	180	210	240	270	300	330						
0	3534	3534	3534	3534	3534	3534	3534	3534	3534	3534	3534	3534						
5	3430	3461	3492	3505	3493	3478	3476	3475	3470	3449	3426	3416						
10	3206	3277	3334	3347	3303	3274	3278	3290	3300	3257	3215	3185						
15	2883	2967	3033	3033	2983	2961	2967	2970	2973	2928	2883	2854						
20	2379	2471	2531	2530	2501	2490	2485	2471	2451	2404	2368	2343						
25	1561	1650	1699	1720	1686	1704	1683	1648	1657	1597	1558	1534						
30	718	758	800	805	780	783	765	760	810	781	727	714						
35	293	299	314	319	298	301	293	296	337	324	300	296						
40	130	130	137	139	132	131	129	127	144	142	134	130						
45	59.4	59.9	59.4	59.5	60.7	62.2	61.3	59.7	60.7	57.2	59.6	58.9						
50	30.3	30.8	29.4	28.8	30.0	32.6	32.3	31.3	29.3	28.5	29.2	30.0						
55	22.7	22.6	20.7	19.7	21.2	23.8	23.9	23.3	20.8	19.2	20.9	22.6						
60	16.5	16.3	13.3	12.2	13.8	17.0	17.2	16.4	13.2	11.7	13.3	16.3						
65	9.80	9.78	7.15	6.29	7.56	10.4	10.4	9.95	7.03	6.02	7.06	9.63						
70	4.79	4.87	3.23	2.80	3.46	5.25	5.23	4.96	3.14	2.63	3.14	4.68						
75	1.93	1.85	1.13	1.01	1.17	2.04	2.12	1.88	1.09	0.91	1.10	1.77						
80	0.59	0.47	0.30	0.29	0.30	0.51	0.62	0.46	0.26	0.24	0.26	0.45						
85	0.15	0.10	0.09	0.10	0.05	0.08	0.13	0.07	0.07	0.09	0.06	0.07						
90	0.00	0.00	0.00	0.00	0.00	0.00	0.00	0.00	0.00	0.00	0.00	0.00						
95	0.00	0.00	0.00	0.00	0.00	0.00	0.00	0.00	0.00	0.00	0.00	0.00						
100	0.00	0.00	0.00	0.00	0.00	0.00	0.00	0.00	0.00	0.00	0.00	0.00						
105	0.00	0.00	0.00	0.00	0.00	0.00	0.00	0.00	0.00	0.00	0.00	0.00						
110	0.00	0.00	0.00	0.00	0.00	0.00	0.00	0.00	0.00	0.00	0.00	0.00						
115	0.00	0.00	0.00	0.00	0.00	0.00	0.00	0.00	0.00	0.00	0.00	0.00						
120	0.00	0.00	0.00	0.00	0.00	0.00	0.00	0.00	0.00	0.00	0.00	0.00						
125	0.00	0.00	0.00	0.00	0.00	0.00	0.00	0.00	0.00	0.00	0.00	0.00						
130	0.00	0.00	0.00	0.00	0.00	0.00	0.00	0.00	0.00	0.00	0.00	0.00						
135	0.00	0.00	0.00	0.00	0.00	0.00	0.00	0.00	0.00	0.00	0.00	0.00						
140	0.00	0.00	0.00	0.00	0.00	0.00	0.00	0.00	0.00	0.00	0.00	0.00						
145	0.00	0.00	0.00	0.00	0.00	0.00	0.00	0.00	0.00	0.00	0.00	0.00						
150	0.00	0.00	0.00	0.00	0.00	0.00	0.00	0.00	0.00	0.00	0.00	0.00						
155	0.00	0.00	0.00	0.00	0.00	0.00	0.00	0.00	0.00	0.00	0.00	0.00						
160	0.00	0.00	0.00	0.00	0.00	0.00	0.00	0.00	0.00	0.00	0.00	0.00						
165	0.00	0.00	0.00	0.00	0.00	0.00	0.00	0.00	0.00	0.00	0.00	0.00						
170	0.00	0.00	0.00	0.00	0.00	0.00	0.00	0.00	0.00	0.00	0.00	0.00						
175	0.00	0.00	0.00	0.00	0.00	0.00	0.00	0.00	0.00	0.00	0.00	0.00						
180	0.00	0.00	0.00	0.00	0.00	0.00	0.00	0.00	0.00	0.00	0.00	0.00						

C Range: 0 - 360DEG
C Interval: 30.0DEG
Test Speed: HIGH
Temperature:25.3℃
Operators:zoe
Test Date:2023-11-4

γ Range: 0 - 180DEG
γ Interval: 1.0DEG
Test System:EVERFINE GO-SPEX500_V1 SYSTEM V2.00.461
Humidity:65.0%
Test Distance:3.160m [K=1.0000]
Remarks: LAMP:BXRE-30G2000-C-83 Ra:90
LENS:PM-1083B 36R
DRIVER: PUP40A-1WMC-850 700mA
30minutes warm-up